

2nd

Radon is the second leading cause of lung cancer behind smoking

21K

In the United States, Radon is responsible for 21,000 lung cancer deaths per year

40%

40% of the homes in PA have radon levels above the recommended EPA levels

For More Info

**National Radon
Hotline**

1-800-SOS-RADON

1-800-767-7236

**PA EPA Radon
Division**

1-800-237-2366

EPA Radon Website

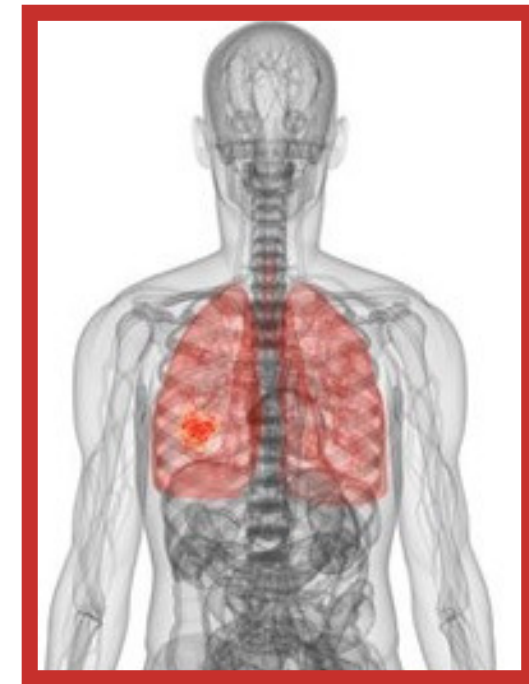
www.epa.gov/radon

Muhlenberg College

www.radonlehighvalley.org

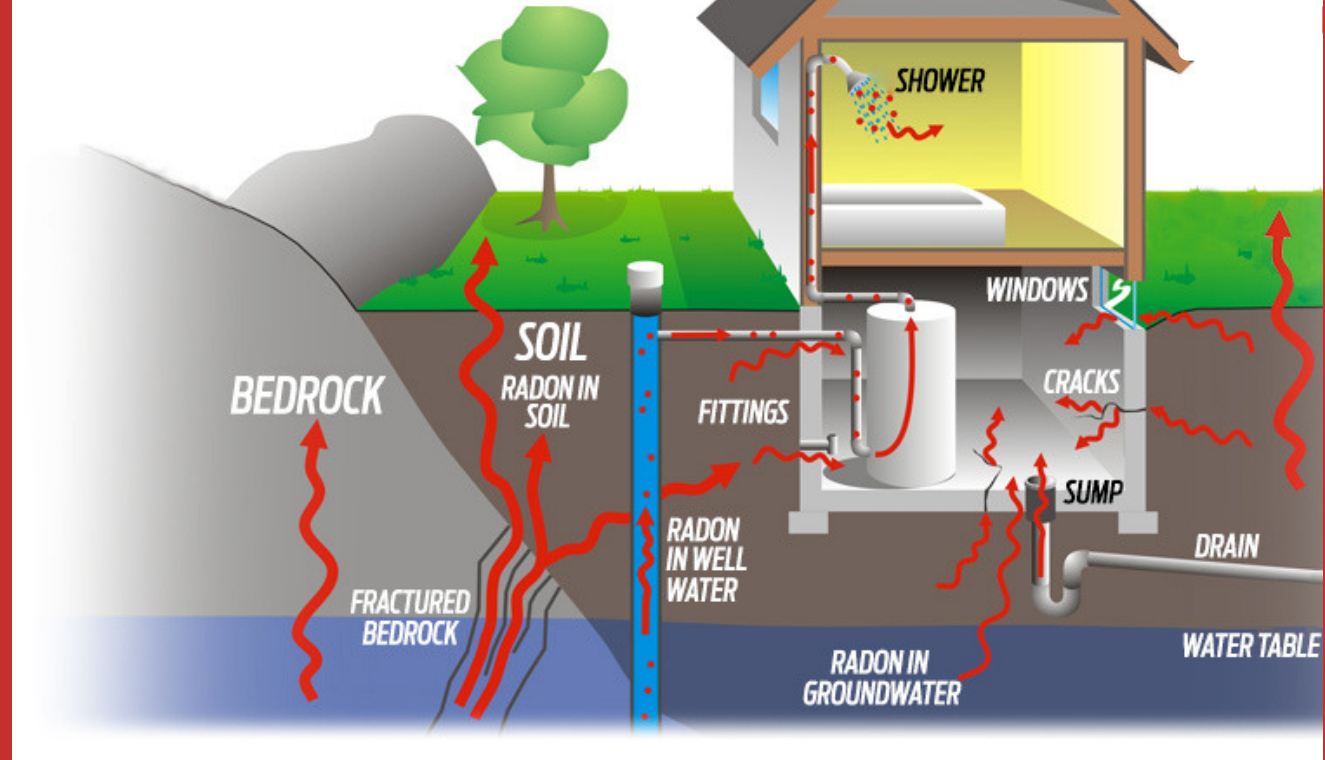


RADON Causes Lung Cancer



WHAT CAN YOU DO TO PREVENT IT?

HOW RADON ENTERS A HOUSE



Radon is a naturally occurring, odorless, colorless, radioactive gas that comes from the ground and can become trapped in homes and other buildings.

Radon levels over **4pCi/L** are dangerous and require action.

In Pennsylvania, approximately 40 % of Pennsylvania homes have radon levels above 4pCi/L.

To Test: Purchase a radon testing kit from a hardware store for about \$8-\$10.

Send your kit to be analyzed after 48 hours. You will receive your results within a week.

If you do have high levels of radon, find a certified mitigation specialist in your area who can install a radon pump to remove radon from your home.